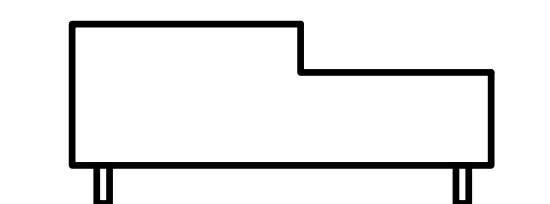


THOMAS G. SMITH | NY: 042383



SUBMITTALS		
NO.	DATE	DESCRIPTION
04.12.22	100%	100% TILT WALL REVIEW
06.09.22		PERMIT

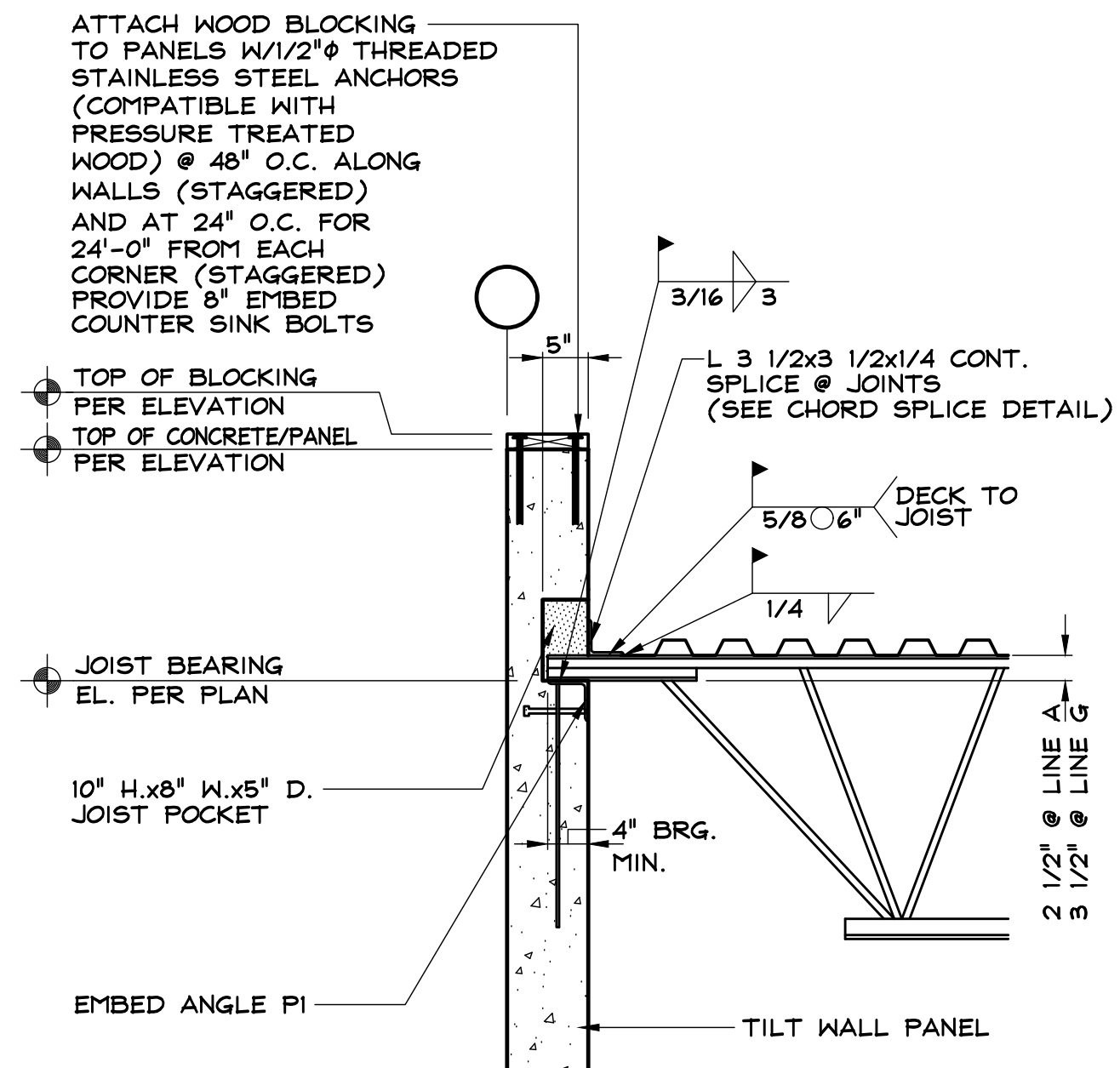
PROJECT NO.
AS286-21 | NY131 | 21-154

DRAWN BY
CEO

SHEET TITLE
TILT WALL DETAILS

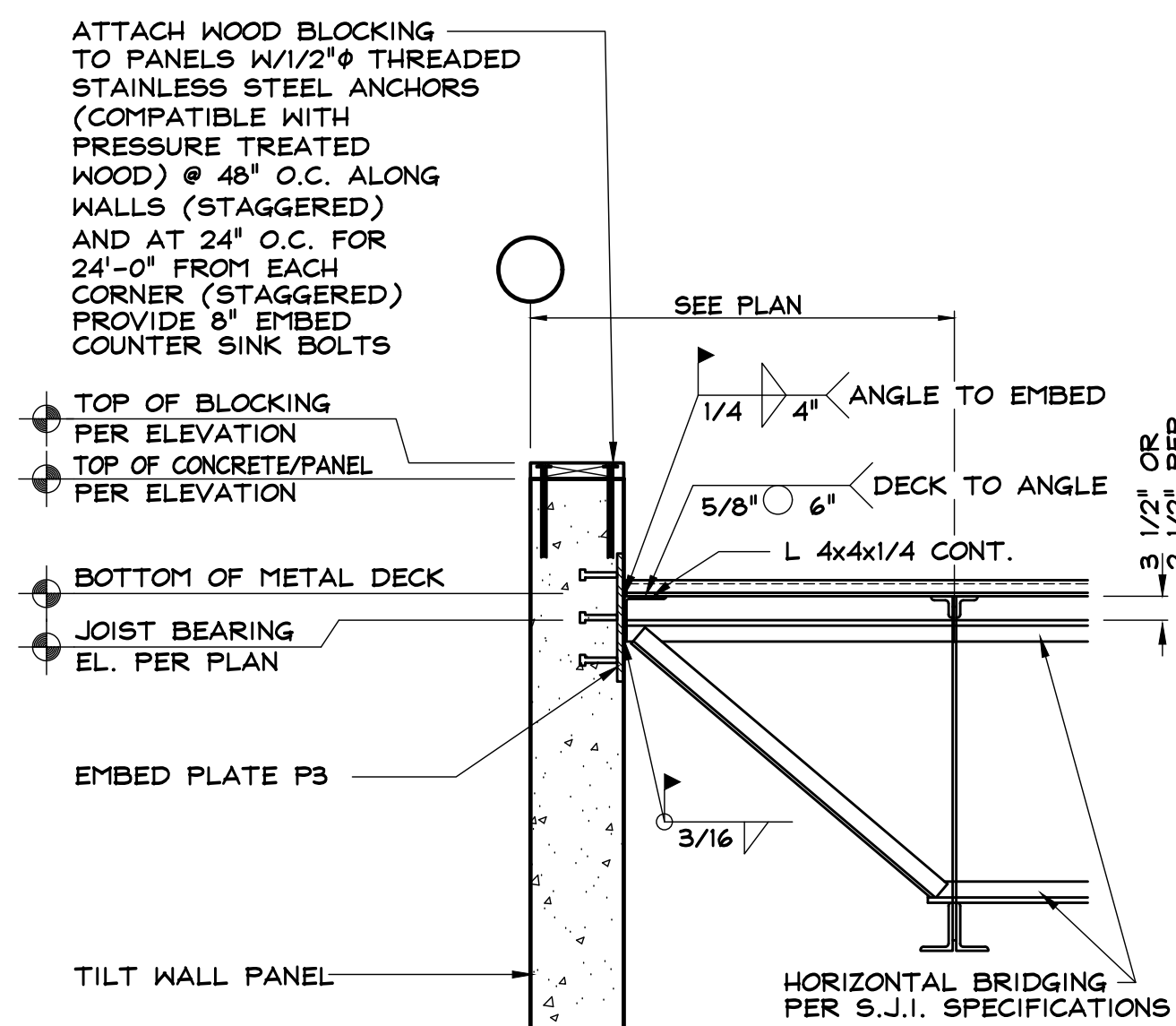
SHEET NO.

T2.2



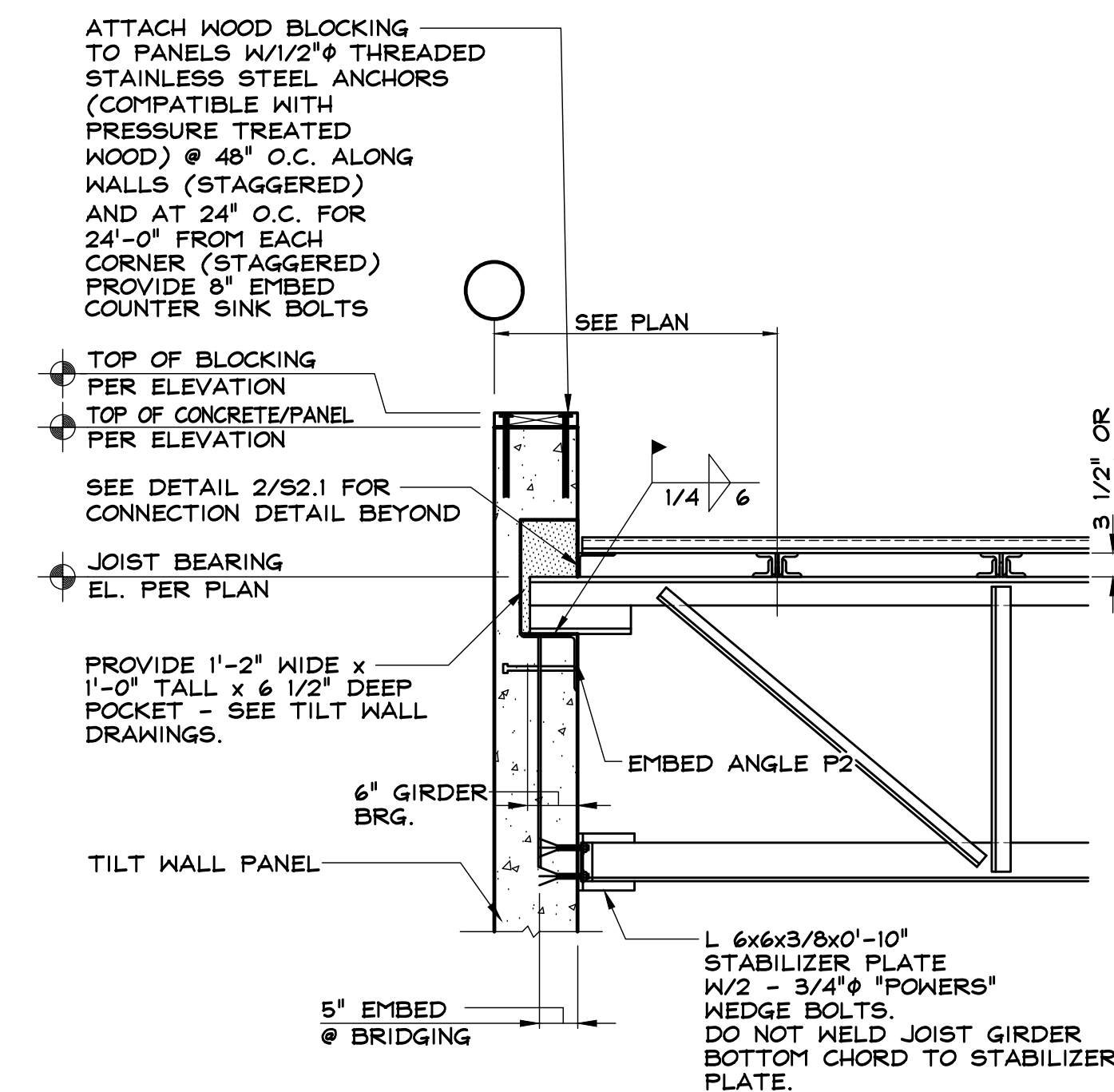
DESIGN JOIST SEAT FOR 1,600 LB ROLL OVER FORCE

SECTION 1
SCALE: 3/4" = 1'-0"
T2.2

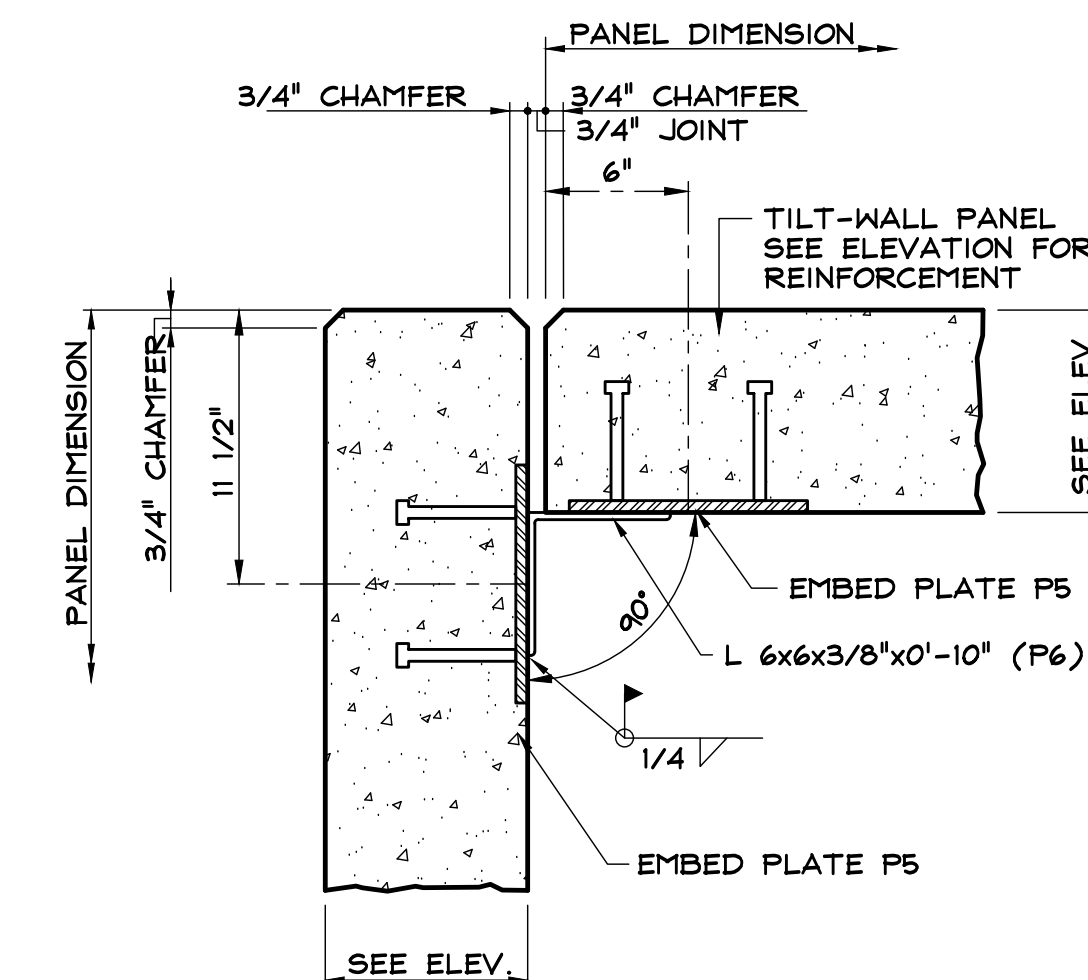


NOTE: BAR JOIST ADJACENT
TO PANEL TO BE DESIGNED
FOR NO CAMBER

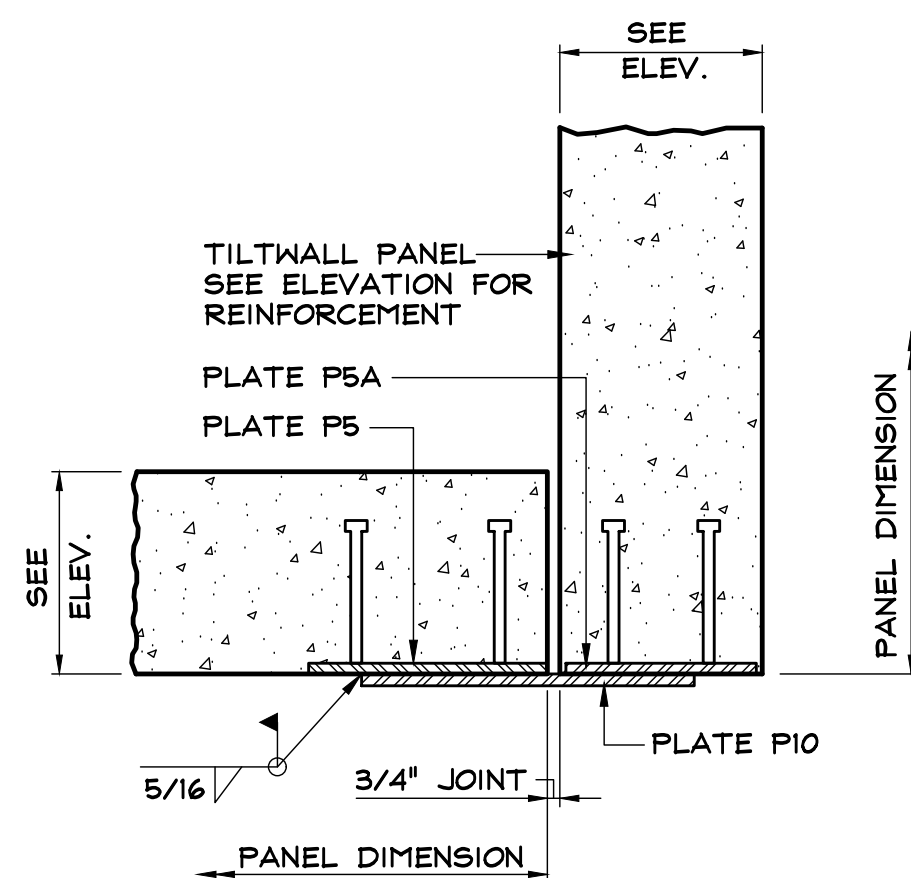
SECTION 2
SCALE: 3/4" = 1'-0"
T2.2



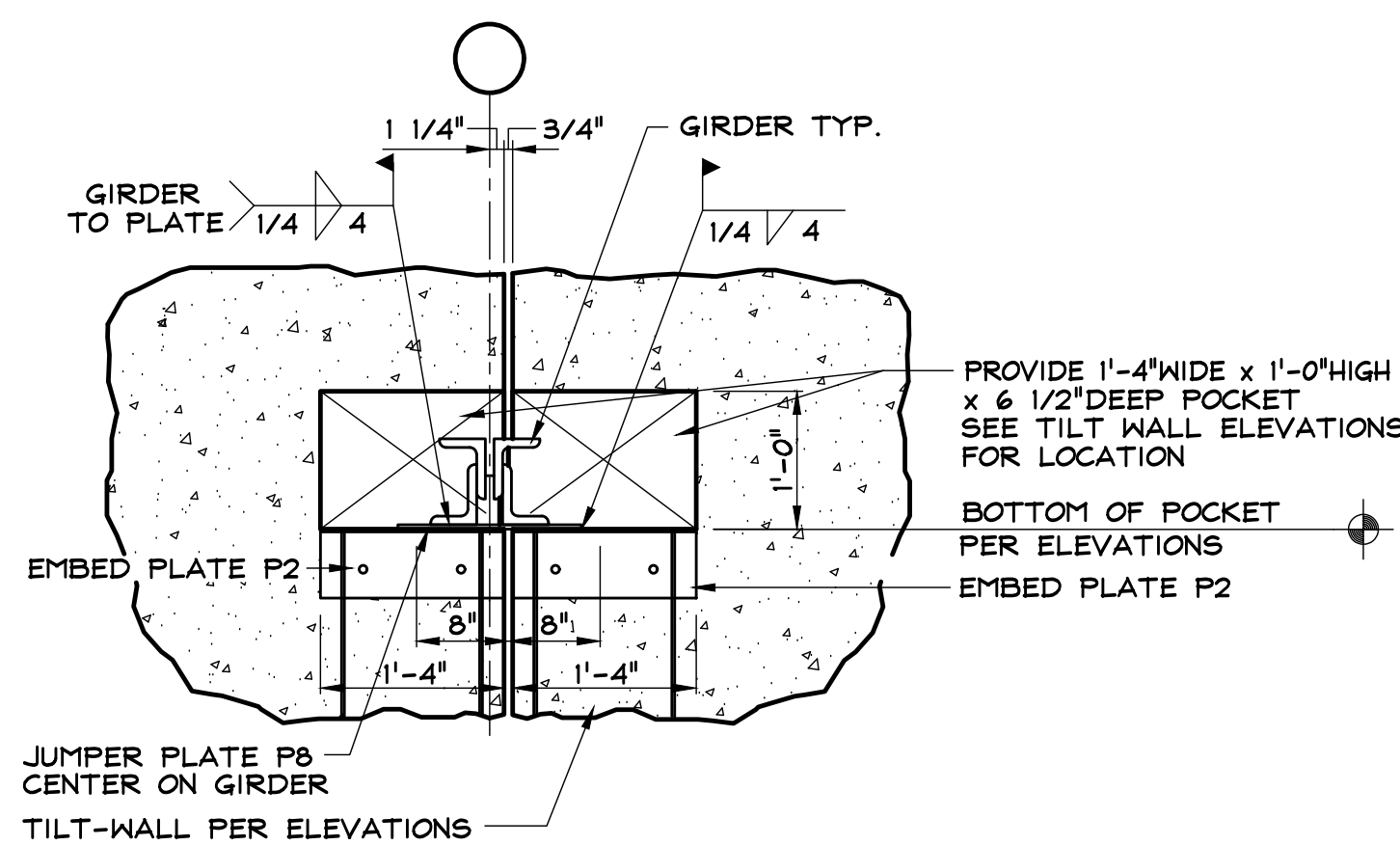
SECTION 3
SCALE: 3/4" = 1'-0"
T2.2



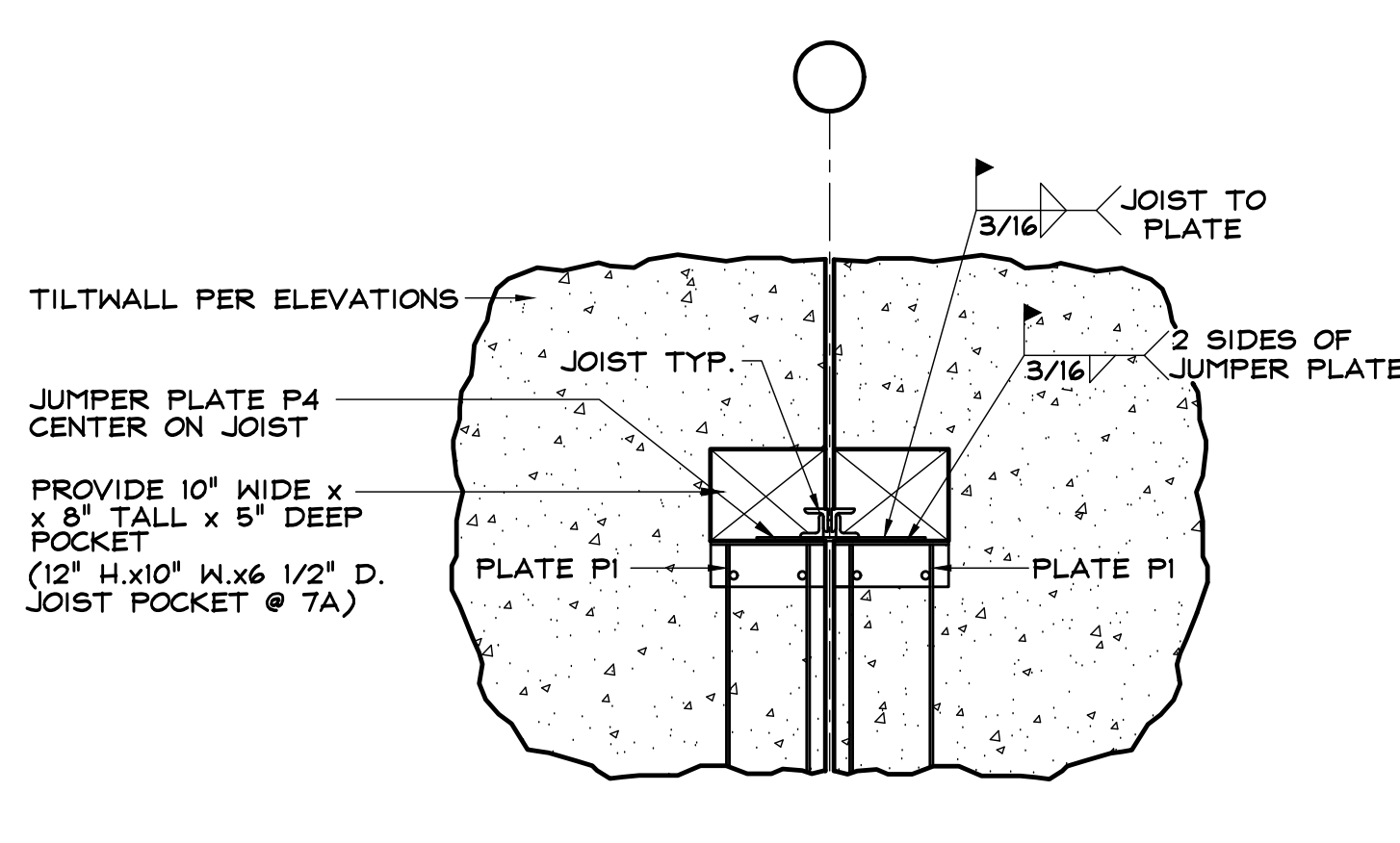
SECTION 4
SCALE: 1 1/2" = 1'-0"
T2.2



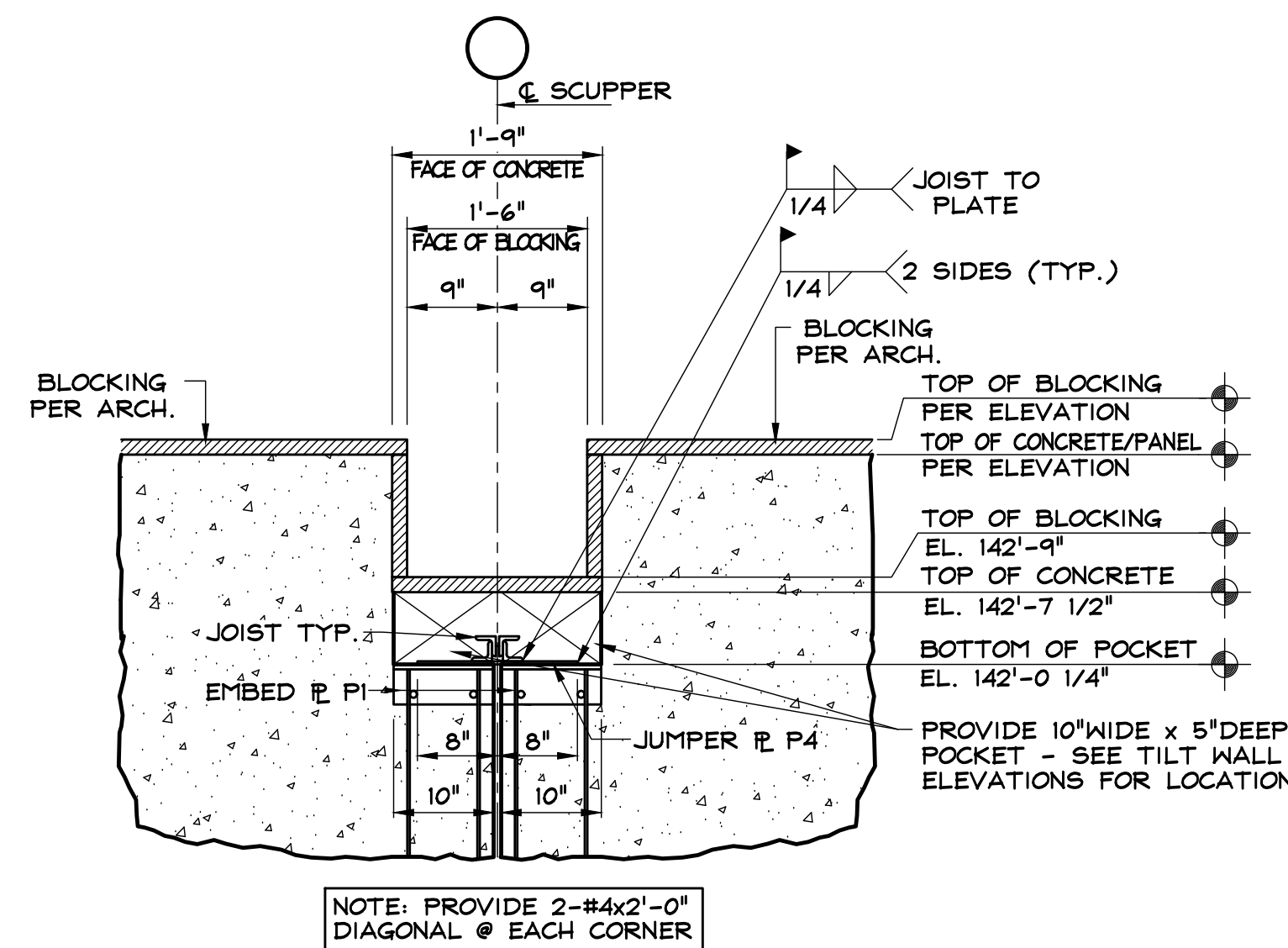
SECTION 5
SCALE: 1 1/2" = 1'-0"
T2.2



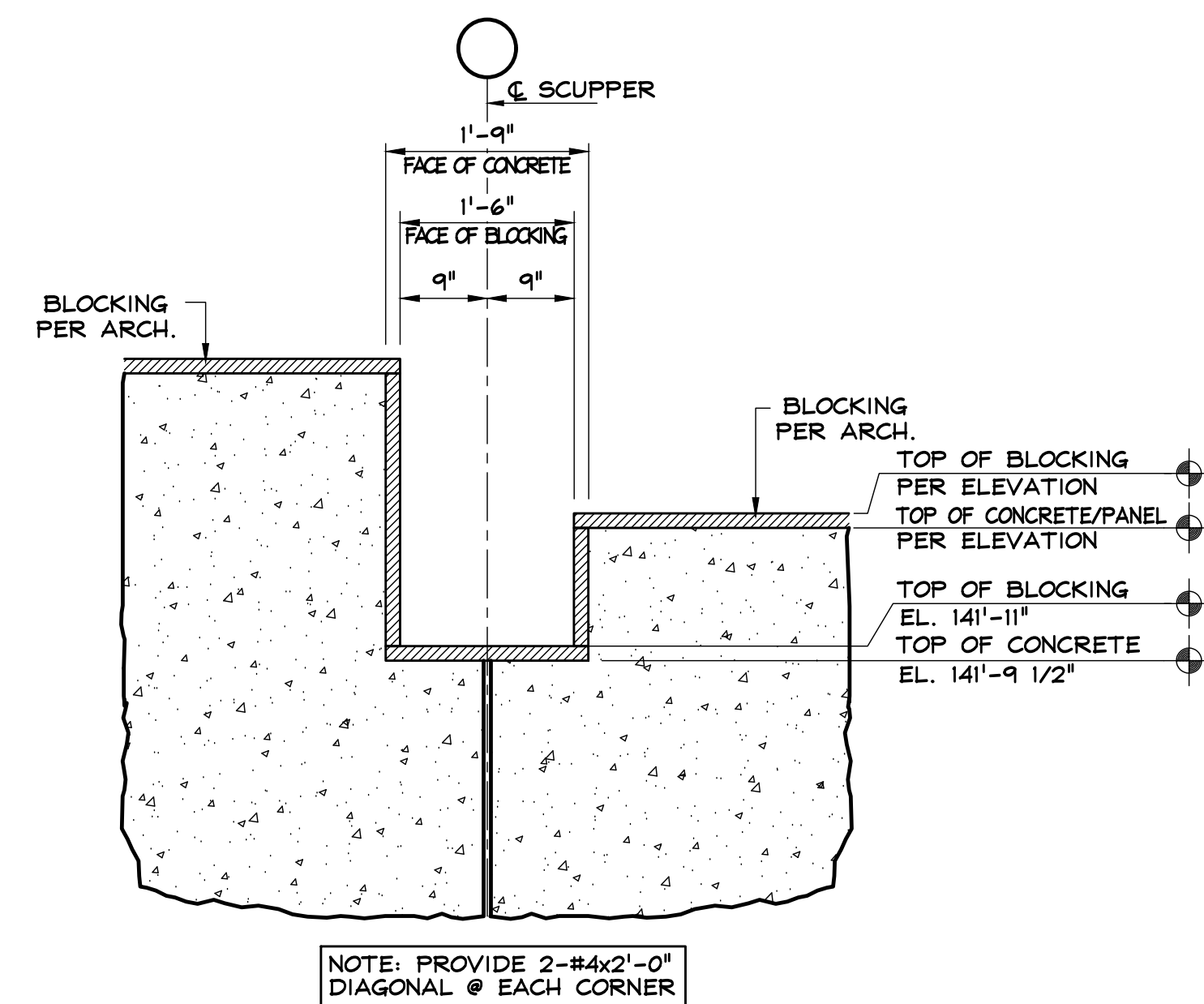
SECTION 6
SCALE: 1 1/2" = 1'-0"
T2.2



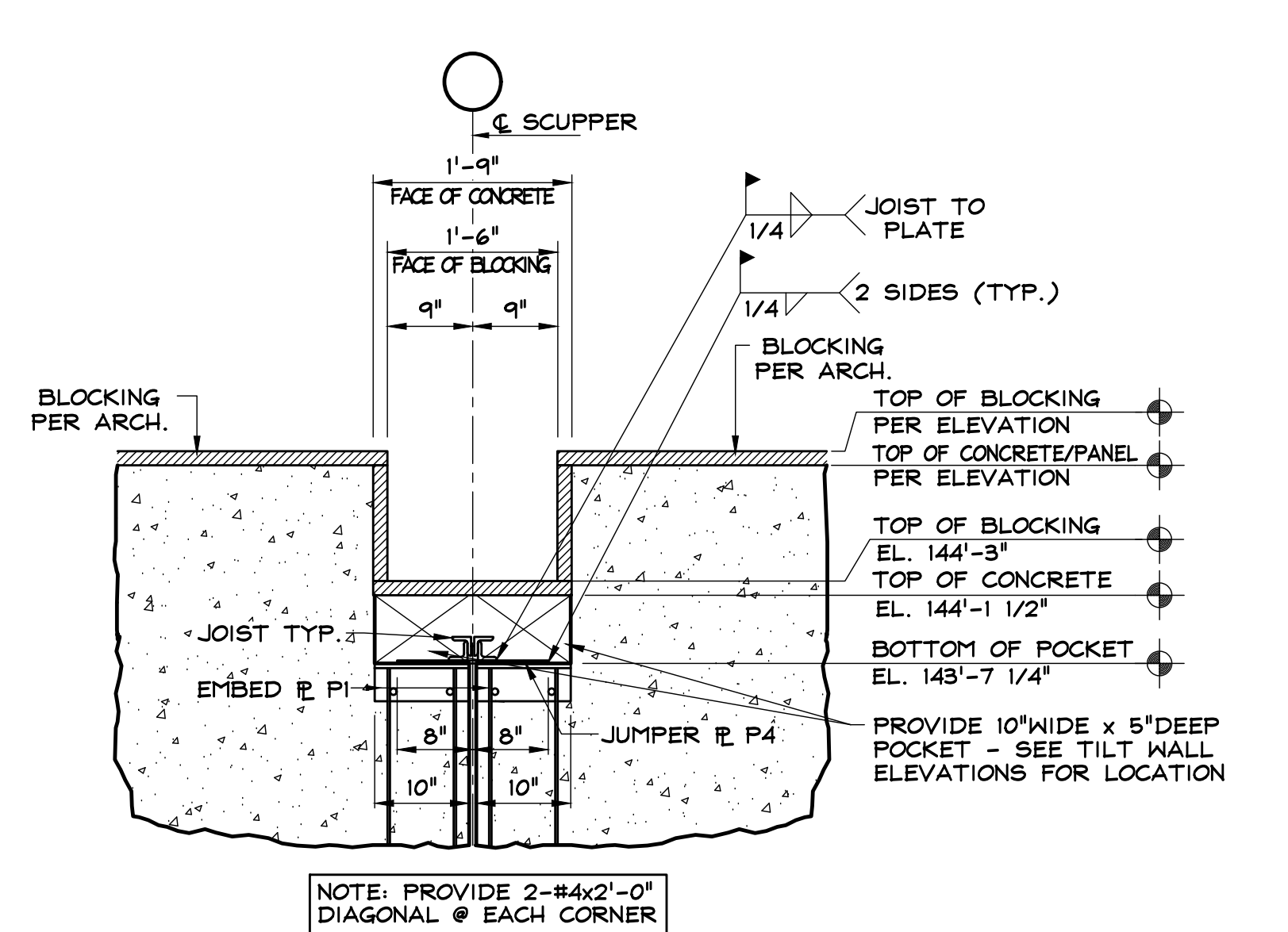
SECTION 7
SCALE: 1 1/2" = 1'-0"
T2.2



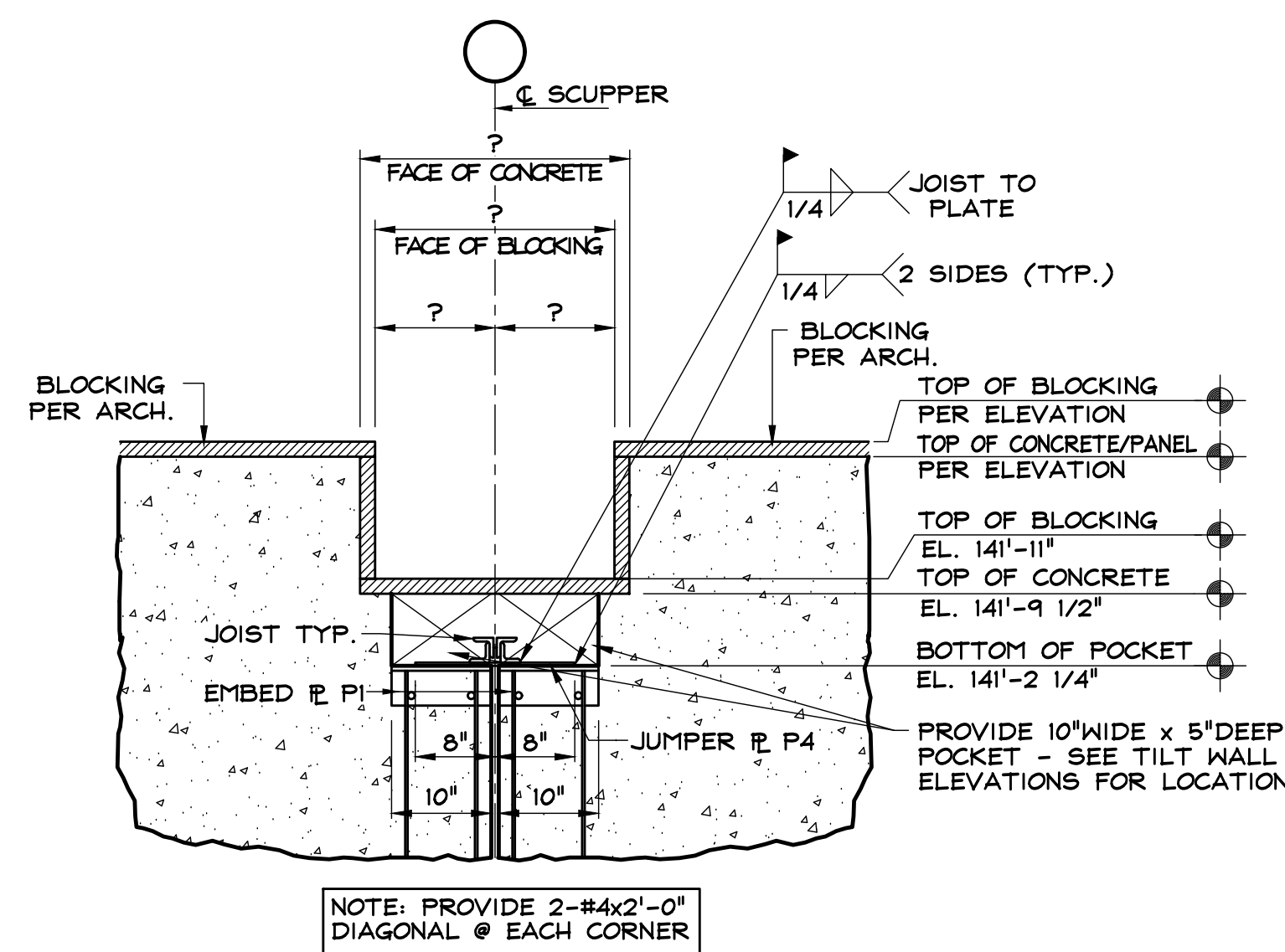
SECTION 8
SCALE: 1 1/2" = 1'-0"
T2.2



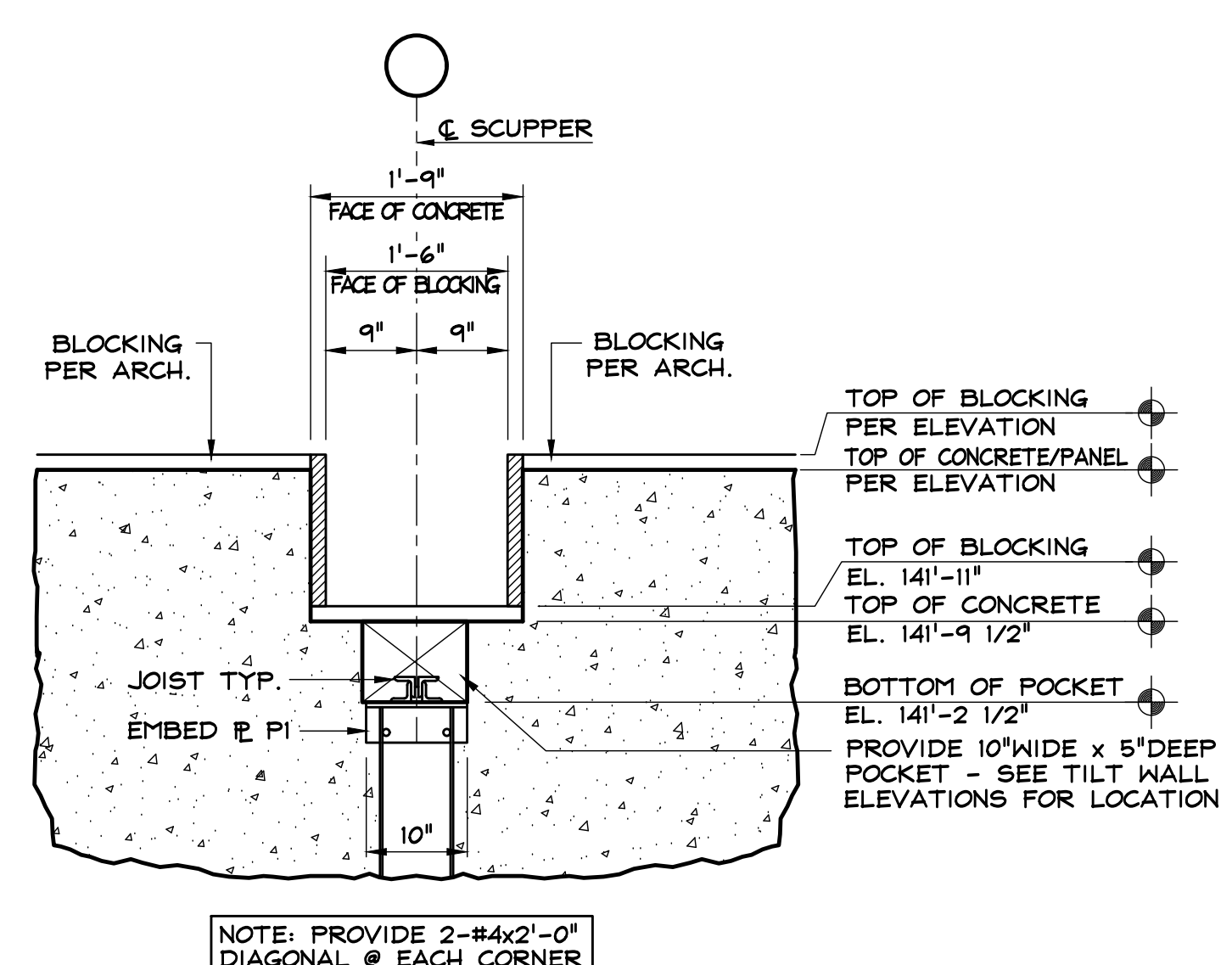
SECTION 9
SCALE: 1 1/2" = 1'-0"
T2.2



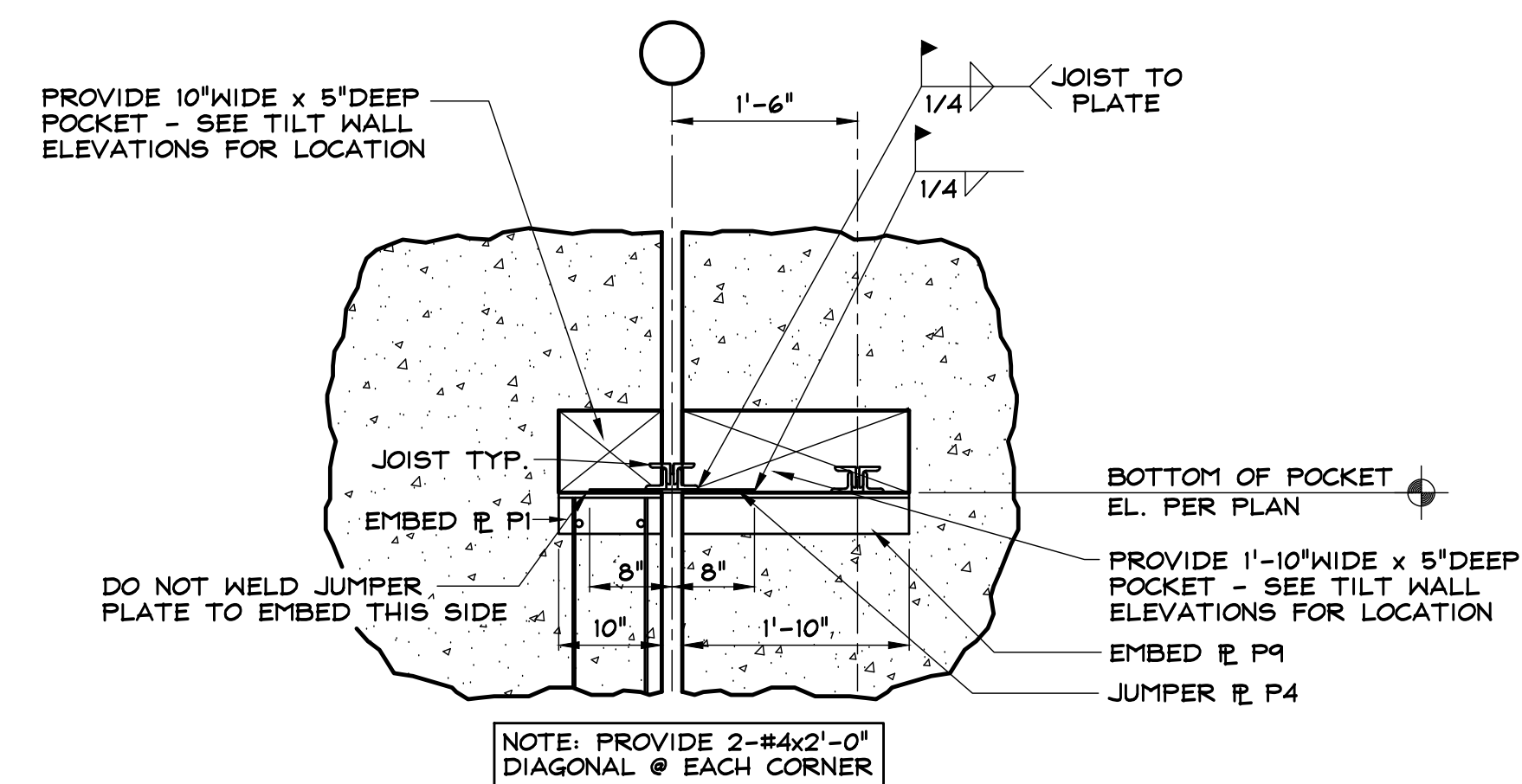
SECTION 10
SCALE: 1 1/2" = 1'-0"
T2.2



SECTION 11
SCALE: 1 1/2" = 1'-0"
T2.2



SECTION 12
SCALE: 1 1/2" = 1'-0"
T2.2



SECTION 13
SCALE: 1 1/2" = 1'-0"
T2.2